



WOODLANDS
CHURCH



SENIOR PASTOR
OPPORTUNITY PROFILE

190 HOOVER RD | PLOVER, WISCONSIN
715.341.0800 | www.woodlandschurch.org

Hello and Welcome!

Greetings from Central Wisconsin! Thank you for taking the time to learn more about the Senior Pastor opportunity at Woodlands Church. We are fully confident that God already knows who our next Senior Pastor is. As a church, we are honored to be searching to discover whom He has called! We haven't done this for quite a while (Pastor Brian has been here for 33 years) so it's with both excitement and a little healthy fear that we undertake this important process!

We are eager to introduce you to Woodlands Church on the following pages. Through words and pictures, we hope you get an idea of our heart and our purpose, along with the scope of the resources with which we have been entrusted. You will also get a glimpse of our mid-sized Upper Midwest community (yes, it snows in April sometimes!). Lastly, we've highlighted some important characteristics and qualifications for this specific position.

If this opportunity sounds like you, please prayerfully consider reaching out to us (wspsdteam@gmail.com). If this sounds like someone you know, please forward it on to them!

Honored to be searching,
Woodlands Senior Pastor Search and
Discovery Team



OUR PURPOSE

To be a Christ-centered community helping people faithfully follow Jesus both locally and globally.

OUR PRIORITIES

Grounded

Building on the Word of God and Prayer.

Grace-Filled

Proclaiming the gospel of grace, and living graciously.

Going

Sharing the good news about Christ, and the love of Christ.

Growing

Helping everyone become more like Christ, in all of life, and for all of life.

Gathering

Pursuing the Christ centered life together in large and small gatherings.

Giving

Practicing faithful generosity with our time, talents and treasures.



ABOUT US

Woodlands Church is a vibrant, Evangelical Free Church located in Central Wisconsin. Over a thousand people take part in our weekend services either in our new Auditorium or online. As the largest church in our area, we are known for strong biblical teaching, vibrant worship and a strong commitment to our community.

Our congregation is missions minded with local and global partnerships.

We work hard to make this big place feel more personal, connecting people in small groups is part of our culture not only for our adult attendees but in our strong children's and youth ministries as well.

Since our founding, 50 years ago, we have been committed to ministering to college students through supporting campus ministries. We promote a culture that embraces change and innovation.

Challenges the last few years have refined our church community. Our united Elder Board and strong staff of 30 (including 7 pastors) work along-side committed volunteers to live out our purpose and priorities.

THE WOODLANDS EXPERIENCE

WARM

We are down to earth and authentic. Woodlands is a place where people feel comfortable and want to stay for awhile.

FRIENDLY

Relationships matter. We are a community of people who are welcoming. People are longing for some type of family-like group where they can belong.

INVITING

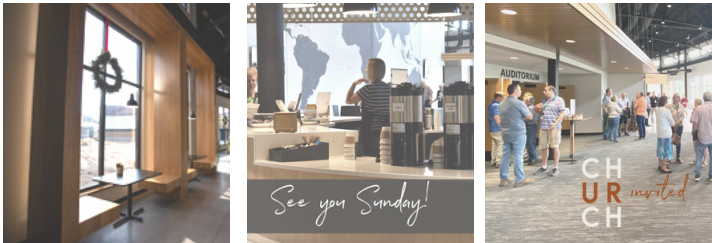
In order for people to stay, they first must come. We are a church who is committed to the Truth and we invite people to follow Jesus with us, in relevant ways.



THINK COFFEE SHOP MEETS CABIN

Our name, Woodlands, doesn't explicitly communicate anything about who we are, so we get to define it. For the people of Central Wisconsin, escaping to the cabin or connecting at a local coffee shop with friends is a very familiar experience. For so many reasons, community is built at these places. We want this to be the unified story we tell, from the aesthetics, to our digital presence, to the Sunday morning experience. This allows people to have a "coffee shop-cabin experience" at Woodlands where they build community and grow in their faith, so that together we can reach the world for Christ.

THE NUMBERS



1100+ in-person attendance

150 watching live

735 adults in groups or classes

68 adult life groups

138 Mid-week Kid's attendance

118 Mid-week Youth attendance

30 talented staff members

18 acre property

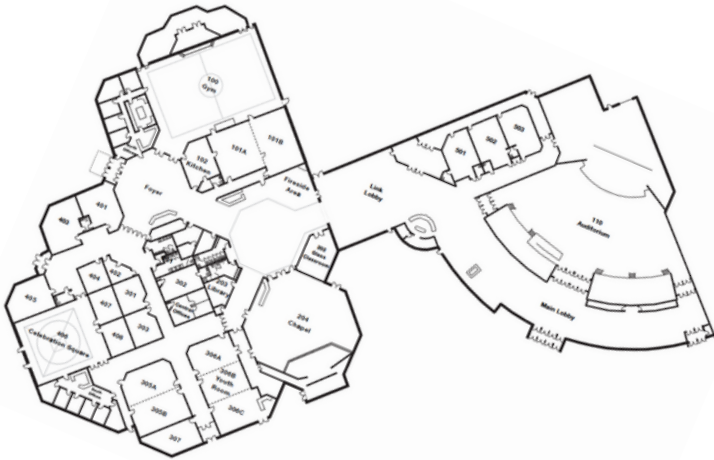
100,000 square foot church building

2.6 million dollar annual budget

BRIEF CHURCH HISTORY

Woodlands Church (formerly known as the Stevens Point Evangelical Free Church) started in 1972, renting space in the YMCA, close to the University of Wisconsin - Stevens Point campus. We moved into our first building in 1985 and to our current location in 1999. Over the last 50 years, Woodlands has grown steadily and consistently. In 2009 we planted a multi-site congregation in the neighboring town of Wisconsin Rapids, and then launched it as Crossview Church, an independent EFCA sister church of 400 in 2017.

OUR FACILITY



OUR FACILITY

We are centrally located in our community on 18 beautiful, wooded acres. Back in 1998, the owners of this land were not planning to sell the property but when we approached them their response was, "we'd love to sell to a church!" God provided in a way that only He could! We have completed 2 additional building programs since then. The most recent was the addition of a 1,175 seat Auditorium and foyer area that was opened in November of 2020. Our total square footage is approximately 100,000.



Our DNA

- Quality, scriptural teaching
- Emphasis on small groups in all our ministries
- Commitment to children and youth programming
- Strong connection to and support of university students and ministries
- Growing network of local and global outreach ministries and partners
- High commitment to international missions
- Consistent community engagement
- Church unity and health
- A culture that embraces change and innovation
- Generous giving and faithful, enthusiastic volunteers
- Strong unity on the leadership board of the church
- A stable and healthy staff team and culture

OUR COMMUNITY

PLOVER, WISCONSIN

Plover is a village in Portage County, Wisconsin. It is part of the Stevens Point Metro Urban Area. We are located right in the middle of the state.

Woodlands Church serves the following communities.

Local Towns | Population

- Plover 12,123
- Stevens Point 26,229
- Whiting 1,714
- Park Ridge 573
- UWSP 7,638
- Total 48,277**

Towns within 30 miles | Population

- Wisconsin Rapids 17,770
- Wausau 38,735
- Mosinee 4,033
- Waupaca 5,952
- Amherst 1,069
- Custer 2,325
- Junction City 454
- Marshfield 18,222
- Total 88,560**



STEVENS POINT, WISCONSIN

The area was originally inhabited by Menominee Indians. George Stevens, a lumberer, traveled to the area from Fort Winnebago in Portage in 1838 and settled it the following year. The city, laid out in 1847, became a lumbering centre and grew in the 1870s after the arrival of the Wisconsin Central Railroad (Soo Line). For more city data go to:

<https://datausa.io/profile/geo/stevens-point-wi#about>

UNIVERSITY WISCONSIN STEVENS POINT

UWSP offers an exceptionally diverse curriculum with more than 100 undergraduate offerings from which to choose. The best-known programs are in biology, communications, fine arts, health promotion, history, education, natural resources, paper science and engineering, interior design and psychology.

For more information about UWSP go to: <https://www.uwsp.edu/>

LARGE EMPLOYERS

- Aspirus Health 11,000 Employees (throughout WI & Northern MI)
- Sentry Insurance 3,796 Employees
- McCain Foods 500 Employees
- Worzalla (Book Printer) 500 Employees
- Delta Dental 375 Employees
- Steel King Industries 350 Employees
- KI Mobility 300 Employees

ACCOLADES

- Bronze Bicycle Friendly Community - League of American Bicyclists
- #6 Best Small City for Families - Forbes.com
- #7 Best Small Cities in the United States - NerdWallet
- Top 200 Towns for Sportsmen - Outdoor Life

For more information about the Stevens Point Area go to <https://www.stevenspointarea.com>

WHAT WE ARE LOOKING FOR

Our current senior pastor is retiring after 33 years and we hope for another long-term pastor who can lead and shepherd us for the next decade or more. He will bring knowledge and experience from education (MDiv or equivalent) and relevant prior assignments. Woodlands will be the epi-center of his ministry for this season, using his gifts and passions to help build a Christ centered community with both local and global impact.

Leader
Overseer
Shepherd
Equipper
Teacher

QUALITIES



A Senior Pastor that is a gifted and compelling Bible teacher, unequivocally committed to the Word of God, tenaciously encouraging congregants' personal growth.

A steady, calm, experienced leader committed to Woodlands Church as his assignment from God, able to lead a large, complex, intentional organization while being an approachable, relatable pastor teaming with our other staff and leaders to accomplish our purpose, living out our priorities.

POSITION SUMMARY:

- **Oversee** the alignment of our purpose and priorities in all ministries and systems.
- **Teach** the Word as the primary Sunday morning preacher while also developing the teaching team and setting direction for sermon series.
- **Lead** our organization, with the Executive Leadership Team, in church wide projects and initiatives by casting vision, communicating, and prioritizing resources.

[Senior Pastor Profile](#)

[Senior Pastor Position Description](#)

[Woodlands Beliefs](#)

To Apply

Please send a cover letter, resume and links to two online sermons to the Woodlands Senior Pastor Search and Discovery Team at wpsdteam@gmail.com.