



WOODLANDS  
CHURCH



Pastor of Senior High  
Youth Ministries

190 HOOVER RD | PLOVER, WISCONSIN  
715.341.0800 | [www.woodlandschurch.org](http://www.woodlandschurch.org)

# Hello and Welcome!

Greetings from Central Wisconsin! Thank you for taking the time to learn more about the Pastor of Senior High Youth Ministries opportunity at Woodlands Church. As a church, we are honored to be searching to discover whom God has called!

We are eager to introduce you to Woodlands Church on the following pages. Through words and pictures, we hope you get an idea of our heart and our purpose, along with the scope of the resources with which we have been entrusted. You will also get a glimpse of our mid-sized Upper Midwest community. Lastly, we've highlighted some important characteristics and qualifications for this specific position.

If this opportunity sounds like you, please prayerfully consider reaching out to us [search@woodlandschurch.org](mailto:search@woodlandschurch.org) . If this sounds like someone you know, please forward it on to them!

Honored to be searching,  
Woodlands Search Team



## OUR PURPOSE

To be a Christ-centered community helping people faithfully follow Jesus both locally and globally.

## OUR PRIORITIES

### **Grounded**

Building on the Word of God and Prayer.

### **Grace-Filled**

Proclaiming the gospel of grace, and living graciously.

### **Going**

Sharing the good news about Christ, and the love of Christ.

### **Growing**

Helping everyone become more like Christ, in all of life, and for all of life.

### **Gathering**

Pursuing the Christ centered life together in large and small gatherings.

### **Giving**

Practicing faithful generosity with our time, talents and treasures.



## ABOUT US

Woodlands Church is a vibrant, Evangelical Free Church located in Central Wisconsin. Over a thousand people take part in our weekend services either in our new Auditorium or online. As the largest church in our area, we are known for strong biblical teaching, vibrant worship and a strong commitment to our community.

Our congregation is missions minded with local and global partnerships.

We work hard to make this big place feel more personal, connecting people in small groups is part of our culture not only for our adult attendees but in our strong children's and youth ministries as well.

Since our founding, 50 years ago, we have been committed to ministering to college students through supporting campus ministries. We promote a culture that embraces change and innovation.

Challenges the last few years have refined our church community. Our united Elder Board and strong staff of 30 (including 7 pastors) work along-side committed volunteers to live out our purpose and priorities.

## THE WOODLANDS EXPERIENCE

### WARM

We are down to earth and authentic. Woodlands is a place where people feel comfortable and want to stay for awhile.

### FRIENDLY

Relationships matter. We are a community of people who are welcoming. People are longing for some type of family-like group where they can belong.

### INVITING

In order for people to stay, they first must come. We are a church who is committed to the Truth and we invite people to follow Jesus with us, in relevant ways.



### THINK COFFEE SHOP MEETS CABIN

Our name, Woodlands, doesn't explicitly communicate anything about who we are, so we get to define it. For the people of Central Wisconsin, escaping to the cabin or connecting at a local coffee shop with friends is a very familiar experience. For so many reasons, community is built at these places. We want this to be the unified story we tell, from the aesthetics, to our digital presence, to the Sunday morning experience. This allows people to have a "coffee shop-cabin experience" at Woodlands where they build community and grow in their faith, so that together we can reach the world for Christ.

### THE NUMBERS



1000+ in-person attendance

150 watching live

800 adults in groups or classes

68 adult life groups

150 Mid-week Kid's attendance

150 Mid-week Youth attendance

30 talented staff members

18 acre property

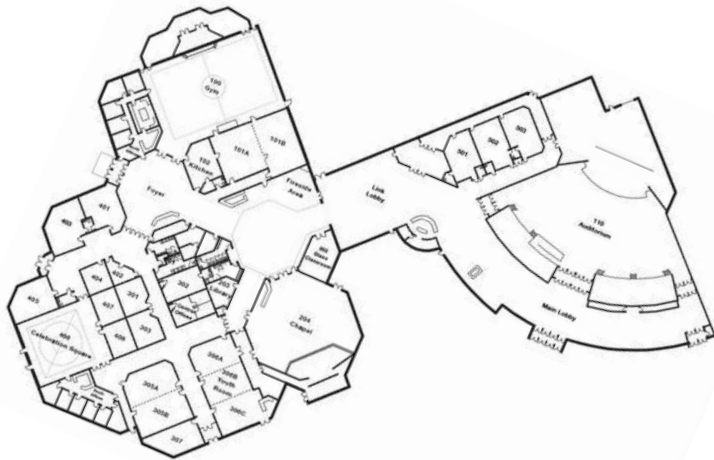
100,000 square foot church building

2.6 million dollar annual budget

### BRIEF CHURCH HISTORY

Woodlands Church (formerly known as the Stevens Point Evangelical Free Church) started in 1972, renting space in the YMCA, close to the University of Wisconsin - Stevens Point campus. We moved into our first building in 1985 and to our current location in 1999. Over the last 50 years, Woodlands has grown steadily and consistently. In 2009 we planted a multi-site congregation in the neighboring town of Wisconsin Rapids, and then launched it as Crossview Church, an independent EFCA sister church of 400 in 2017.

# OUR FACILITY



## OUR FACILITY

We are centrally located in our community on 18 beautiful, wooded acres. Back in 1998, the owners of this land were not planning to sell the property but when we approached them their response was, "we'd love to sell to a church!" God provided in a way that only He could! We have completed 2 additional building programs since then. The most recent was the addition of a 1,175 seat Auditorium and foyer area that was opened in November of 2020. Our total square footage is approximately 100,000 SF.



## Our DNA

- Quality, scriptural teaching
- Emphasis on small groups in all our ministries
- Commitment to children and youth programming
- Strong connection to and support of university students and ministries
- Growing network of local and global outreach ministries and partners
- High commitment to international missions
- Consistent community engagement
- Church unity and health
- A culture that embraces change and innovation
- Generous giving and faithful, enthusiastic volunteers
- Strong unity on the leadership board of the church
- A stable and healthy staff team and culture

# OUR COMMUNITY

## PLOVER, WISCONSIN

Plover is a village in Portage County, Wisconsin. It is part of the Stevens Point Metro Urban Area. We are located right in the middle of the state.

Woodlands Church serves the following communities.

### Communities | Population      Communities within 30 miles | Population

• Plover	12,123	• Wisconsin Rapids	17,770
• Stevens Point	26,229	• Wausau	38,735
• Whiting	1,714	• Mosinee	4,033
• Park Ridge	573	• Waupaca	5,952
• UWSP	7,638	• Amherst	1,069
• Hull	<u>5,493</u>	• Custer	2,325
<b>Total</b>	<b>53,770</b>	• Junction City	454
		• Marshfield	<u>18,222</u>
		<b>Total</b>	<b>88,560</b>



## STEVENS POINT, WISCONSIN

The area was originally inhabited by Menominee Indians. George Stevens, a lumberer, traveled to the area from Fort Winnebago in Portage in 1838 and settled it the following year. The city, laid out in 1847, became a lumbering centre and grew in the 1870s after the arrival of the Wisconsin Central Railroad (Soo Line). For more city data go to:

<https://datausa.io/profile/geo/stevens-point-wi#about>

## UNIVERSITY WISCONSIN STEVENS POINT

UWSP offers an exceptionally diverse curriculum with more than 100 undergraduate offerings from which to choose. The best-known programs are in biology, communications, fine arts, health promotion, history, education, natural resources, paper science and engineering, interior design and psychology.

For more information about UWSP go to: <https://www.uwsp.edu/>

## LARGE EMPLOYERS

Aspirus Health	11,000 Employees
(throughout WI & Northern MI)	
Sentry Insurance	3,796 Employees
McCain Foods	500 Employees
Worzalla (Book Printer)	500 Employees
Delta Dental	375 Employees
Steel King Industries	350 Employees
KI Mobility	300 Employees

## ACCOLADES

Bronze Bicycle Friendly Community - League of American Bicyclists  
#6 Best Small City for Families - Forbes.com  
#7 Best Small Cities in the United States - NerdWallet  
Top 200 Towns for Sportsmen - Outdoor Life

For more information about the Stevens Point Area go to <https://www.stevenspointarea.com>

## WHAT WE ARE LOOKING FOR

We are currently looking for a Pastor of Senior High Youth Ministries. This person will work with the Woodlands Youth Team to help students faithfully follow Jesus by leading them in trusting Jesus, being with Him, and becoming like Him. This person should enjoy spending time with students and be skilled in interacting with them. They must also desire to recruit and develop adult leaders who can invest in the lives of students.



## QUALITIES

- A clear calling to Youth Ministry
- Sincerely loves people with a shepherd's heart and aches for the lost
- Successful track record of recruiting, equipping, making disciples and multiplying volunteers
- Strong organizational, communication and time management skills
- Sees value and joy in longevity
- Team player who loves being a part of and building teams

## POSITION SUMMARY

-Design, plan and implement activities to help students and leaders faithfully follow Jesus in collaboration with the Pastor of Junior High Youth Ministries.

-Teach from the text of the Bible in a way that intrigues and engages students and adults while also clearly communicating the meaning of the text.

-Recruit, oversee, care for, and train teams of adults as they disciple youth and lead groups, activities, and events.

[Position Description](#)

[Woodlands Beliefs](#)

[Next Steps for Application](#)

Please send application information to [search@woodlandschurch.org](mailto:search@woodlandschurch.org)